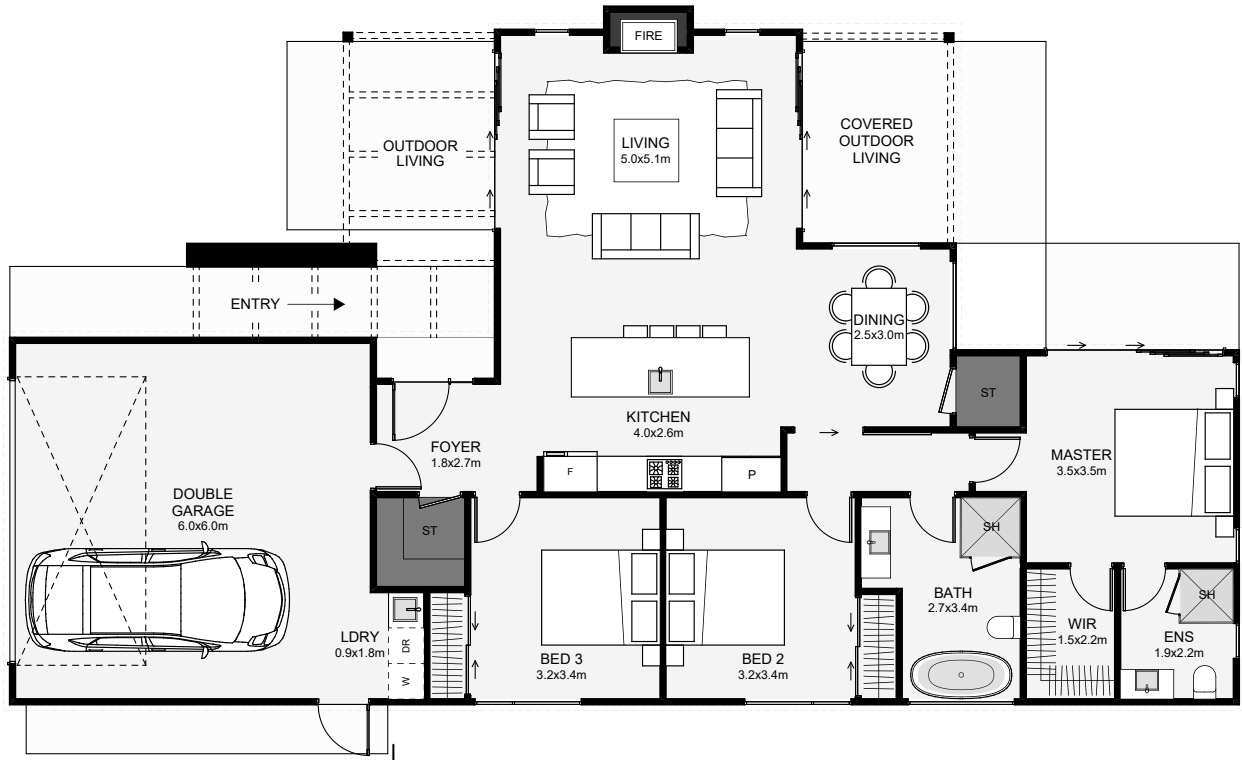




The shape of this home maximises its outdoor living space. Inside, the living room extends out from the kitchen so both morning and afternoon sun can be enjoyed, also creating two outdoor living spaces. The dining is positioned in a cosy nook allowing for unique ceiling finishes. The master includes an ensuite and walk-in wardrobe; the bathroom can be quickly accessed with its position close to both bedrooms and the living. This home has a sophisticated elegance and charm!



Floor Area: 157m²

20.7m
11.8m

Contact us:

Call Amy: 021 424 700
E: amy@buildtaupo.co.nz
www.buildtaupo.co.nz

