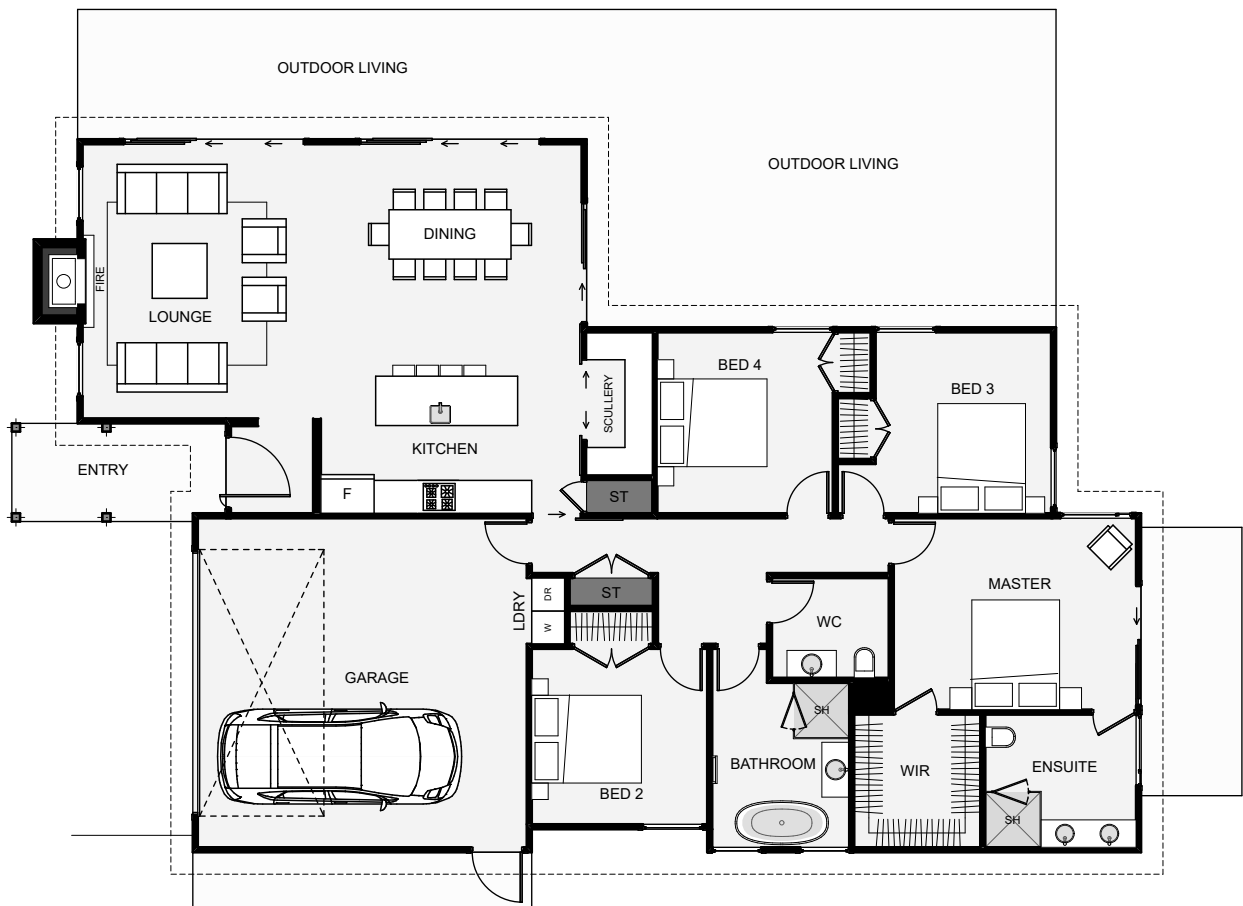




This home oozes with timeless street appeal and character, the kind of home that doesn't date. The home is also surprisingly small in size with no downsides. The home includes a good size scullery, four bedrooms, a decent master with a large walk-in wardrobe and ensuite with a dual vanity, plus some fine exterior styling that will last a lifetime!



Floor Area: 195m<sup>2</sup>

 2
  4
  2
  1
  20.1m
  13.0m

Contact us:

**Call Amy:** 021 424 700  
**E:** amy@buildtaupo.co.nz  
**www.buildtaupo.co.nz**

