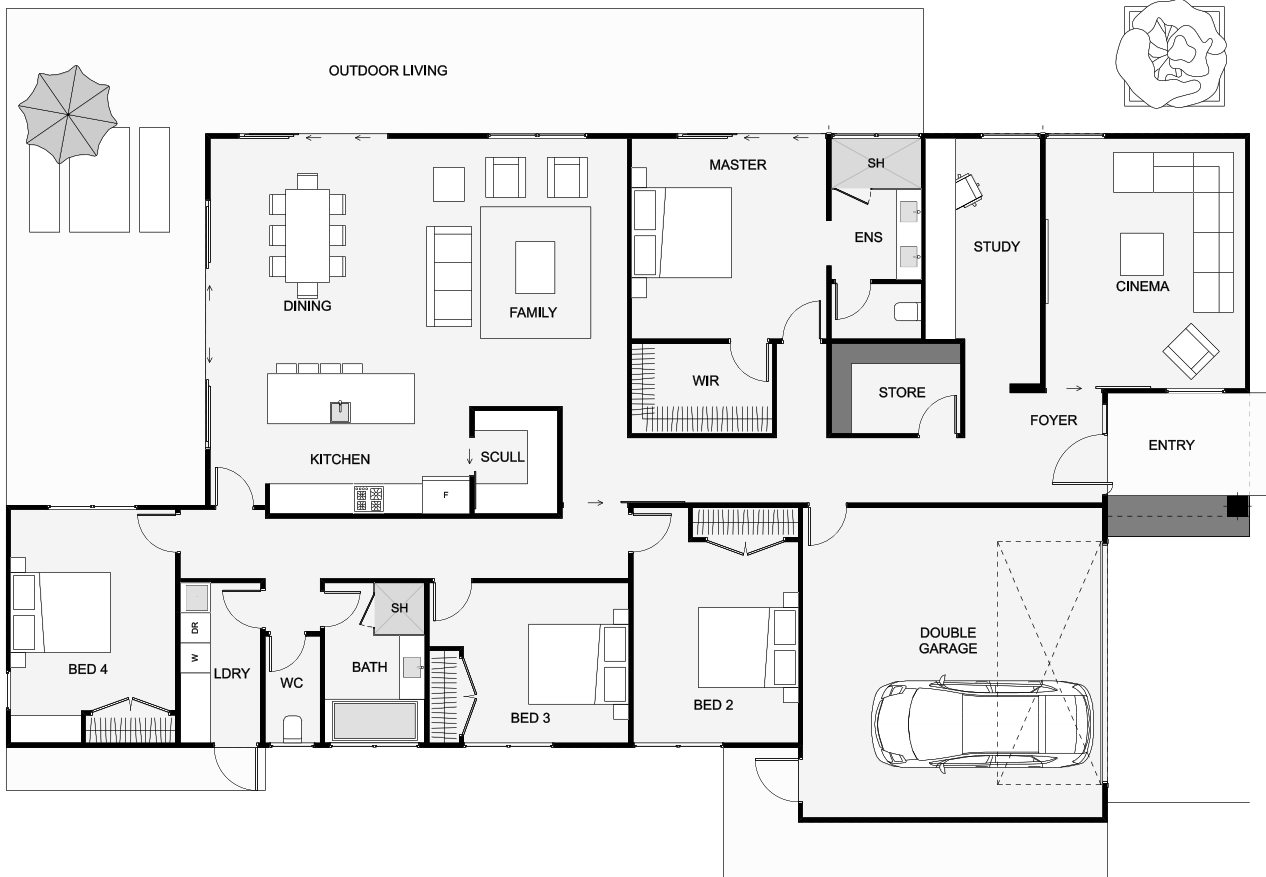


# Lookout



Get some modern street appeal with architectural twin gables and dark weatherboard cladding. This home has two living spaces, each at opposite ends of the house, always handy! Also included is a large study, close to the entry, so great if you work from home. Also included is a large laundry, scullery and a living space which flows out to the outdoor living. This home really does work as good as it looks!



Floor Area: 265m<sup>2</sup>

2  
 4+  
 2  
 2  
 24.9m   13.8m

Contact us:

**Call Amy:** 021 424 700  
**E:** amy@buildtaupo.co.nz  
**www.buildtaupo.co.nz**

