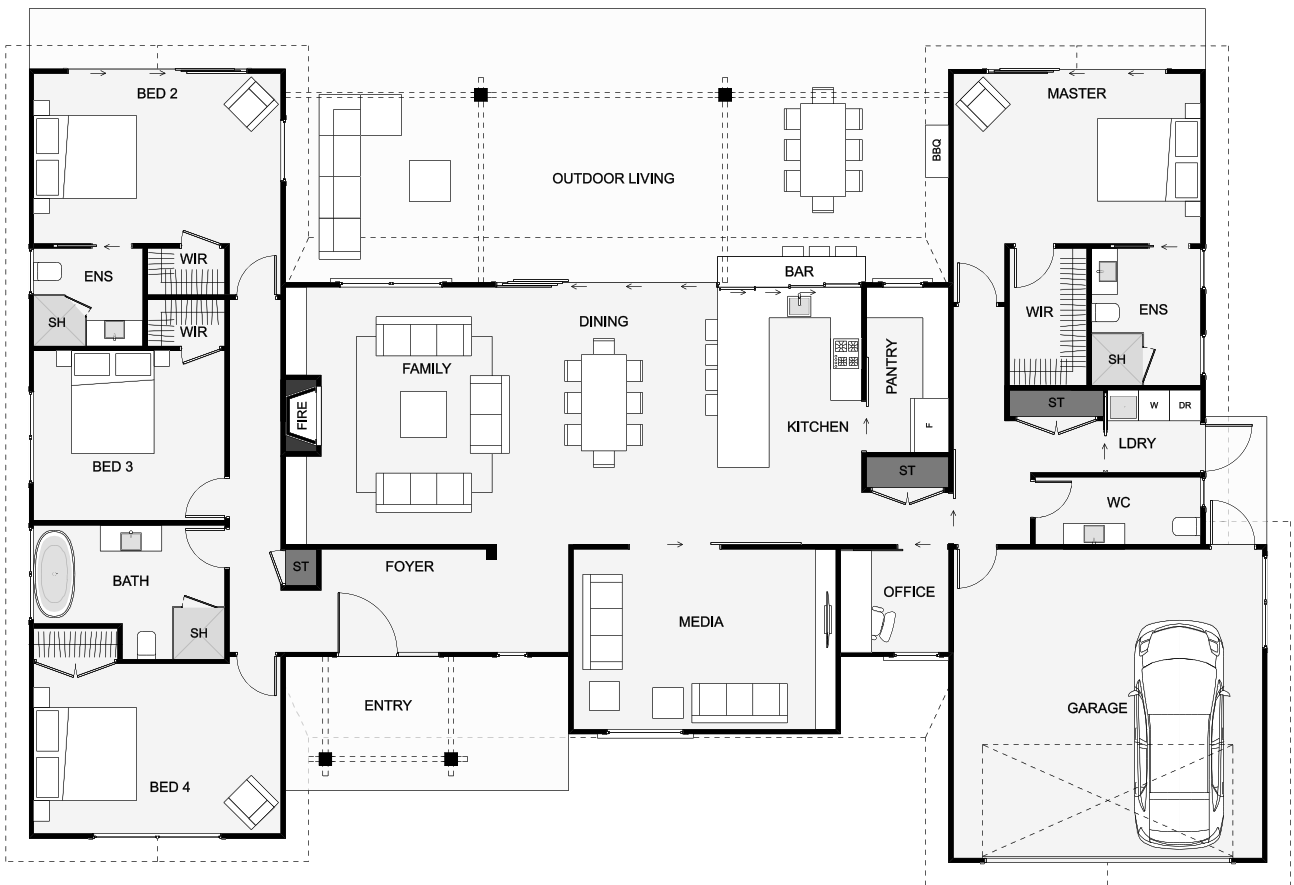




Inside this home, you'll discover an open-plan living and dining area that continues out to the alfresco area with outdoor dining and a bar. A master suite at one end of the home and a secondary master suite at the opposite, both with built-in wardrobes and ensuites. This stunning home will provide your family with all the elements you would expect for a superior lifestyle!



Floor Area: 260m<sup>2</sup>

2  
 4+  
 2  
 2  
 22.8m  
 15.4m

Contact us:

**Call Amy:** 021 424 700  
**E:** amy@buildtaupo.co.nz  
**www.buildtaupo.co.nz**

